

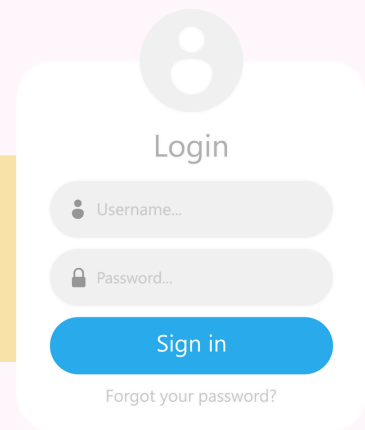
LOG IN THE MODERN WAY WITH PASSKEYS

Why It's Better:

- Syncs across your devices (iPhone, Android, Mac, Windows).
- Fast login with Face ID, fingerprint, or device PIN.
- No more password resets.

01.

Open your company's login page on your device.



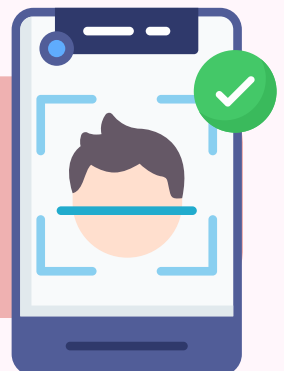
Choose "Sign in with a passkey" and follow prompts to create one.

02.



03.

Next time you log in, just approve with your fingerprint or Face ID.



Quick Tip 💡 : Passkeys are tied to your device. If you switch devices, you'll need to re-enroll.